

7 April 2017

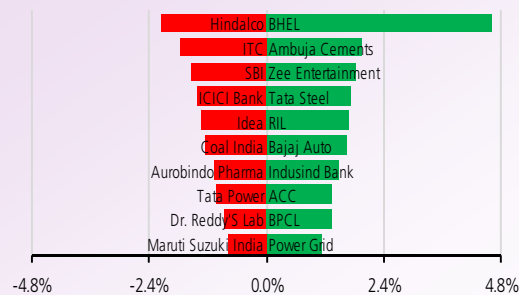
NIFTY TO TRADE BETWEEN 9190-9320

On daily charts, Nifty manages to hold above 9250 level after a volatile session. Some consolidation is expected as the index is in overbought state. Intraday Supports are at 9190/9150 & Resistance at 9280/9320 levels.

TRADERS COMMENT

Sensex and Nifty ended slightly lower after the Reserve Bank of India kept repo rate unchanged at 6.25 per cent at its first bi-monthly monetary policy review for financial year 2017-18 while projecting India's growth to strengthen to 7.4 per cent in 2017-18 from 6.7 per cent in 2016-17. Sensex was down 46.90 points or -0.16% at 29927.34 and Nifty was down -3.20 points or -0.03% at 9261.95.

NIFTY MOVERS & SHAKERS



TOP 5 SECTOR MOVERS

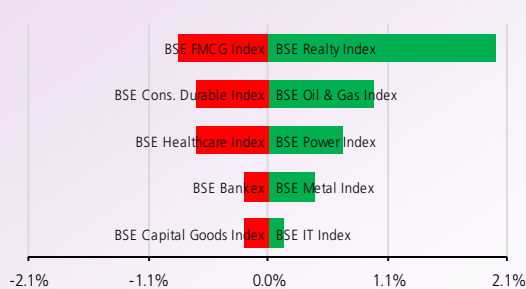


Chart of the Day Torrent Pharma Ltd Buy above Rs1500

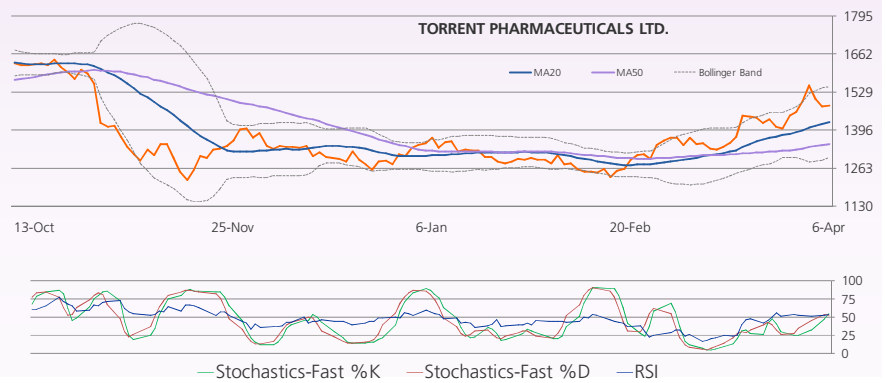
Torrent Pharma is in strong uptrend above its 20 dma support. We recommend a buy only above Rs1500 with the stop loss of Rs1460 for the target of Rs1570.

Chart of the Day

Buy: Torrent Pharma Ltd CMP:1479.3

Technical Call of the Day

Sell: Ashokleyland Ltd CMP:84.80



Technical call of the Day Ashok Leyland Ltd April Future Sell below Rs84.50

We recommend a Sell in Ashok Leyland April future only below Rs84.50 with the stop loss of Rs86 for the target of Rs82.



We are also available on:



E-mail : research@destimoney.com
www.destimoney.com

STOCKS TRADING IN POSITIVE ZONE: RELIANCE, RECL
 STOCKS TRADING IN NEGATIVE ZONE: JUSTDIAL, JUBILANTFOOD

Corporate Snapshot

- Bharti Airtel** : Bharti Airtel has doubled its network size by installing 1.8 lakh mobile sites in the past two years. In the last two years (fiscal year 2016 and 2017), Airtel has deployed 180,000 mobile sites across India. This is same as the number of mobile sites deployed by the company in the first 20 years of operations, making it one the largest mobile network rollouts globally. The deployment is part of Airtel's 'Project Leap' under which the company committed to invest Rs 60,000 crore over a period of three years beginning November 2015.

CMP:	341.8
P/E(ttm):	20.2
Impact	Neutral
- Emami Ltd** : Fast moving consumer goods (FMCG) company Emami Ltd plans capital expenditure of Rs 800 crore for its agri tech business in the next four years for expansion in product portfolio and strengthen its presence in existing markets. For its "Healthy & Tasty" brand edible oil alone, the company plans a capital expenditure of Rs 200 crore on marketing and promotion across the country.

CMP:	1038.0
P/E(ttm):	69.0
Impact	Neutral
- Coal India Ltd:** The government has garnered about Rs 2,638 crore from buyback of shares of state-run Coal India Ltd, Parliament was informed on Thursday. CIL has bought back "7,88,42,816 shares from Government of India out of the total offer of 10,89,55,223 equity shares @ Rs 335 per equity shares. Accordingly, Government of India received around Rs 2,638 crore as buyback proceeds.

CMP:	286.4
P/E(ttm):	11.8
Impact	Neutral
- Tata Motors** : Tata Motors has received an order for 500 buses from Ivory Coast. As part of the deal, the company has handed over the first lot of 117 low-floor urban city buses to the African nation. The buses are being financed under the Exim Bank of India for operation by SOTRA – Abidjan Transport Company.

CMP:	473.2
P/E(ttm):	NA
Impact	Neutral
- Cipla:** Drug firm Cipla's US arm has signed a licensing pact with MEDRx Company to develop and market a Tizanidine1 patch that targets management of spasticity. Under the terms of the pact, MEDRx is eligible to receive up to USD 30 million cumulatively through upfront and developmental, regulatory, and commercial milestones payments.

CMP:	590.3
P/E(ttm):	8.1
Impact	Neutral

ttm = trailing twelve months

Economic Snapshot

- The Rajya Sabha on Thursday cleared four goods and services tax (GST) Bills. Now, the President's consent and approval of the Assemblies are required for clearing all legislative hurdles, before the unified indirect tax regime is rolled out. Before passage of the Bills, Finance Minister Arun Jaitley sought to allay the Opposition's apprehension over the requirement of multiple registrations for companies and powers to arrest given to officials under the proposed GST rules.
- The services sector expanded for a second consecutive month in March, indicating that the predominant sector of the economy has recovered from the demonetisation setback, a private survey released on Thursday has shown. The widely tracked Nikkei Services Purchasing Managers' Index (PMI) for services rose to a five-month high of 51.5 points in March, compared to 50.3 in the previous month. A reading above 50 signifies expansion, while one below that shows contraction.

DERIVATIVES

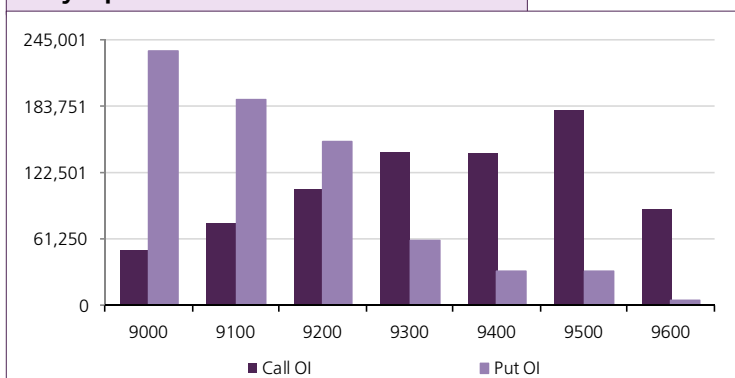
Open Interest Gainers

Stock	Open Interest (contracts)	OI Change (%)	Price (Rs.)	Price change (%)
MUTHOOTFIN	1,084,500	32.2%	381.85	-4.2%
UJJIVAN	4,981,200	30.7%	395.15	-3.5%
MFSL	3,111,000	20.7%	606.50	1.3%
EQUITAS	6,390,400	15.6%	168.95	-1.0%
DLF	35,825,000	12.6%	157.20	4.4%

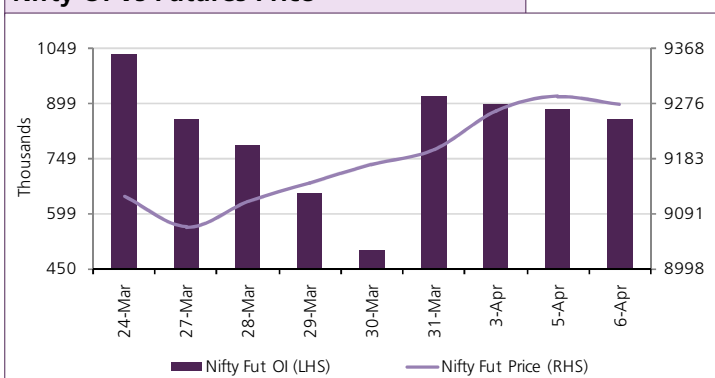
Open Interest Losers

Stock	Open Interest (contracts)	OI Change (%)	Price (Rs.)	Price change (%)
BHEL	28,705,000	-11.9%	179.25	4.4%
CEATLTD	1,786,400	-10.0%	1381.80	3.0%
TITAN	5,283,000	-9.2%	489.95	-0.6%
IBREALEST	34,010,000	-7.6%	91.35	0.5%
ADANIPTS	12,005,000	-6.2%	357.30	-0.3%

Nifty Option OI Distribution



Nifty OI Vs Futures Price



Top 5 Traded Stock Futures

Stock	Expiry Date	No of contracts traded	Contract value (Rs. Lacs)	LTP
RELIANCE	27-Apr-17	44,448	317,728	1438
SBIN	27-Apr-17	19,879	176,427	294
TATASTEEL	27-Apr-17	15,808	156,765	502
BHARATFIN	27-Apr-17	18,012	140,587	777
DLF	27-Apr-17	15,969	124,069	157

Top 5 Traded Stock Options

Stock	Expiry Date	Option Type	Strike price	No of contracts traded	Contract value (Rs. Lacs)	LTP
RELIANCE	27-Apr-17	CE	1,440	8,624	63,510	35.60
RELIANCE	27-Apr-17	CE	1,500	7,972	60,352	15.00
RELIANCE	27-Apr-17	CE	1,460	6,994	51,932	27.00
RELIANCE	27-Apr-17	PE	1,400	6,729	47,904	19.60
RELIANCE	27-Apr-17	CE	1,420	5,058	36,931	45.30

Top 5 Contract Future Volumes

Stock	Expiry Date	No of Contracts traded	Current Cash Volume	Cash Delivery %
RELIANCE	27-Apr-17	44,448	11,571,075	46.4%
SBIN	27-Apr-17	19,879	18,413,111	34.4%
BHARATFIN	27-Apr-17	18,012	7,461,301	34.7%
AXISBANK	27-Apr-17	16,037	9,928,098	48.6%
DLF	27-Apr-17	15,969	17,207,813	18.6%

Bottom 5 Contract Future Volumes

Stock	Expiry Date	No of Contracts traded	Current Cash Volume	Cash Delivery %
GODREJCP	27-Apr-17	151	99,655	79.3%
SHREECEM	27-Apr-17	171	10,952	68.3%
PAGEIND	27-Apr-17	182	7,829	43.2%
NHPC	27-Apr-17	210	4,222,200	37.2%
KPIT	27-Apr-17	215	440,144	36.0%

SUPPORT / RESISTANCE LEVEL

Company Name	Closing Price	S3	S2	S1	Pivot	R1	R2	R3
ACC	1489.75	1422.15	1444.68	1467.22	1481.08	1503.62	1540.02	1576.42
Adani Ports	356.65	343.60	347.95	352.30	355.45	359.80	367.30	374.80
Ambuja Cements	243.35	227.20	232.58	237.97	241.63	247.02	256.07	265.12
Asian Paints	1086.90	1054.00	1064.97	1075.93	1082.47	1093.43	1110.93	1128.43
Aurobindo Pharma	670.45	660.05	663.52	666.98	670.97	674.43	681.88	689.33
Axis Bank	508.70	492.65	498.00	503.35	510.50	515.85	528.35	540.85
Bajaj Auto	2806.30	2747.10	2766.83	2786.57	2800.78	2820.52	2854.47	2888.42
Bank Of Baroda	174.90	169.55	171.33	173.12	175.13	176.92	180.72	184.52
Bharti Airtel	341.80	332.20	335.40	338.60	340.80	344.00	349.40	354.80
Bharti Infratel	339.15	310.05	319.75	329.45	335.10	344.80	360.15	375.50
BHEL	179.10	161.25	167.20	173.15	176.55	182.50	191.85	201.20
Bosch	22897.75	22391.75	22560.42	22729.08	22838.67	23007.33	23285.58	23563.83
BPCL	646.20	617.40	627.00	636.60	642.10	651.70	666.80	681.90
Cipla	590.30	580.45	583.73	587.02	590.33	593.62	600.22	606.82
Coal India	286.40	281.70	283.27	284.83	287.32	288.88	292.93	296.98
Dr. Reddy'S Lab	2718.10	2667.50	2684.37	2701.23	2724.72	2741.58	2781.93	2822.28
Eicher Motors	25596.30	24980.40	25185.70	25391.00	25570.50	25775.80	26160.60	26545.40
Gail	386.65	371.85	376.78	381.72	385.13	390.07	398.42	406.77
Grasim	1069.10	1041.85	1050.93	1060.02	1067.08	1076.17	1092.32	1108.47
HCL Technologies	853.50	837.45	842.80	848.15	852.35	857.70	867.25	876.80
HDFC	1482.60	1446.20	1458.33	1470.47	1480.23	1492.37	1514.27	1536.17
HDFC Bank	1438.50	1407.10	1417.57	1428.03	1435.52	1445.98	1463.93	1481.88
Hero Motocorp	3206.30	3130.35	3155.67	3180.98	3200.32	3225.63	3270.28	3314.93
Hindalco	193.95	186.00	188.65	191.30	194.00	196.65	202.00	207.35
HUL	934.65	905.75	915.38	925.02	930.63	940.27	955.52	970.77
ICICI Bank	280.85	274.80	276.82	278.83	281.27	283.28	287.73	292.18
Idea	86.60	83.50	84.53	85.57	87.28	88.32	91.07	93.82
Indusind Bank	1421.65	1367.40	1385.48	1403.57	1414.78	1432.87	1462.17	1491.47
Infosys	999.60	978.20	985.33	992.47	999.13	1006.27	1020.07	1033.87
ITC	274.10	267.25	269.53	271.82	275.48	277.77	283.72	289.67
Kotak Mahindra Bank	894.35	869.90	878.05	886.20	891.85	900.00	913.80	927.60
L&T	1683.20	1635.65	1651.50	1667.35	1684.85	1700.70	1734.05	1767.40
Lupin	1448.40	1421.70	1430.60	1439.50	1448.25	1457.15	1474.80	1492.45
M&M	1288.90	1256.40	1267.23	1278.07	1285.98	1296.82	1315.57	1334.32
Maruti Suzuki India	6291.65	6184.00	6219.88	6255.77	6295.88	6331.77	6407.77	6483.77
NTPC	167.70	161.95	163.87	165.78	166.92	168.83	171.88	174.93
ONGC	187.55	182.30	184.05	185.80	186.95	188.70	191.60	194.50
Power Grid	197.20	188.25	191.23	194.22	196.08	199.07	203.92	208.77
RIL	1438.50	1355.50	1383.17	1410.83	1429.87	1457.53	1504.23	1550.93
SBI	292.85	285.35	287.85	290.35	293.95	296.45	302.55	308.65
Sun Pharma	686.90	673.35	677.87	682.38	687.67	692.18	701.98	711.78
Tata Motors	473.20	462.70	466.20	469.70	474.10	477.60	485.50	493.40
Tata Motors DVR	286.45	277.50	280.48	283.47	285.48	288.47	293.47	298.47
Tata Power	87.30	85.10	85.83	86.57	87.38	88.12	89.67	91.22
Tata Steel	501.65	463.50	476.22	488.93	496.67	509.38	529.83	550.28
TCS	2400.05	2375.10	2383.42	2391.73	2400.87	2409.18	2426.63	2444.08
Tech Mahindra	446.90	434.20	438.43	442.67	445.53	449.77	456.87	463.97
Ultratech	4111.15	3920.20	3983.85	4047.50	4098.15	4161.80	4276.10	4390.40
Wipro	514.70	497.35	503.13	508.92	512.23	518.02	527.12	536.22
Yes Bank	1564.75	1536.15	1545.68	1555.22	1565.28	1574.82	1594.42	1614.02
Zee Entertainment	553.40	523.15	533.23	543.32	549.08	559.17	575.02	590.87

Disclaimer

Destimoney Securities Private Limited (hereinafter referred to as "Destimoney") is a registered Member of National Stock Exchange of India Limited, Bombay Stock Exchange Limited and MCX Stock Exchange Limited. Destimoney is also registered as a Depository Participant with CDSL. Destimoney is in the process of making an application with SEBI for registering it as a Research Entity in terms of SEBI (Research Analyst) Regulations, 2014. Destimoney or its associates has not been debarred/ suspended by SEBI or any other regulatory authority for accessing /dealing in securities Market and no material disciplinary action has been taken by SEBI/other regulatory authorities impacting Destimoney's Equity Research Analysis. Destimoney or its associates/analyst including its relatives do not hold any actual/beneficial ownership of more than 1% in the company/ies covered by Analyst (hereinafter referred to as "Subject Company/ies"). Destimoney or its associates/analyst including its relatives may hold financial interest in the company/ies covered by Analyst (hereinafter referred to as "Subject Company/ies"). Destimoney or its associates/analysts or his/her relative does not receive any compensation or other benefits from the subject company/ies mentioned in this research report (hereinafter referred to as "Report") or from a third party in connection with preparation of the report. Accordingly, Destimoney or its associates/analyst or his/her relative does not have any other material conflict of interest at the time of publication of the Report.

Research analyst/s engaged in preparation of the Report, has not received any compensation / managed or co-managed public offering of securities of the subject company/ies / has not received compensation for investment banking or merchant banking or brokerage services from the subject company/ies / has not received compensation for products or services other than investment banking or merchant banking or brokerage services from the subject company/ies / has not received compensation or other benefits from the subject company/ies or third party in connection with the Report of the subject company/ies during the past twelve months / has not served as an officer, director or employee of subject Company/ies and is not engaged in market making activity of the subject Company/ies.

Destimoney or its associates are engaged in various financial services business, thus, it might have, received any compensation / managed or co-managed public offering of securities of the subject company/ies / received compensation for investment banking or merchant banking or brokerage services from the subject company/ies / received compensation for products or services other than investment banking or merchant banking or brokerage services from the subject company/ies / received compensation or other benefits from the subject company/ies or third party in connection with the Report of subject company/ies during the past twelve months engaged in market making activity for the subject company/ies.

In the preparation of the material contained in the Report, Destimoney has used information that is publicly available, as also data developed in-house. Some of the material used in the document may have been obtained from members/persons other than Destimoney and which may have been made available to Destimoney. Information gathered & material used in the Report is believed to be from reliable sources. Destimoney has not independently verified all the information and opinions given in this material/document/Report. Accordingly, no representation or warranty, express or implied, is made as to the accuracy, authenticity, completeness or fairness of the information and opinions contained in this material/document/Report. For data reference to any third party in this material no such party will assume any liability for the same.

Destimoney group companies provides finance related product services like distribution of financial products and as such is a provider of many services like loans, mutual funds, tax & trust planning etc. mentioned in this brochure. And hence, Destimoney do not warranty / guarantee about performance of any products and customer servicing w.r.t third party products per se.

Third party products are subject to code of conduct to be adhered to by the representatives of Destimoney and Destimoney is not responsible for the losses, whether actual or notional incurred by any investor. Services assured and expected may vary from actual service and Destimoney does not guarantee about the quality of services. Investments in securities and commodities are subject to market and other risks and there is no assurance or guarantee that the objectives of any of the Investments/Schemes/product would be achieved. Past performances are only indicative and returns are not assured and guaranteed by Destimoney group companies. The price, value of and income from any of the securities or financial instruments mentioned in this report can fall as well as rise. The value of securities and financial instruments is subject to exchange rate fluctuation that may have a positive or adverse effect on the price or income of such securities or financial instruments.

The recipient alone shall be fully responsible, and/or liable for any decision taken on the basis of this material/document/Report. Destimoney does not in any way through this material solicit or offer for purchase or sale of any financial services, commodities, products dealt in this material/document/Report. Destimoney/its affiliates/associates/directors shall not be in any way responsible for any loss or damage of any nature, including but not limited to direct, indirect, punitive, special, exemplary, and consequential, as also any loss of profit that may arise to any person/entity from or in connection with the use of information contained in this material/document/Report. All recipients of this material/document/Report before dealing and/or transacting in any of the products advised, opined or referred to in this material shall make their own investigation, seek appropriate professional advice and make their own independent decision. Noting contained in this material/document/Report should be construed as investment or financial advice. Clients are advised to assess their risk profile/ appetite before acting on any information contained in this material/document/Report. Investors should also refer to risk tag and compare it with its own risk appetite before taking any investment decision.

Reports on technical and derivative analysis are based on studying charts of a stock's price movement, outstanding positions and trading volume as opposed to focussing on a company's fundamentals and as such, may not match with a report on a company's fundamentals. The opinions expressed in the Report are our current opinions as of the date of this report and may be subject to change from time to time without notice. Destimoney or any persons connected with it do not accept any liability arising from use of this material/document/Report.

Information/ opinion conveyed through this material/document/Report are strictly meant for the registered Clients of Destimoney group of Companies of the respective segments. This information is not intended for distribution to, or use by, any person or entity in any jurisdiction or country where such distribution or use would be contrary to law or regulation or which would subject Destimoney or its affiliates to any registration requirement within such jurisdiction or country. This information does not constitute an offer to sell or a solicitation of an offer to buy any financial products to any person in any jurisdiction where it is unlawful to make such an offer or solicitation. No part of this material may be duplicated in whole or in part in any form and / or redistributed without the prior written consent of Destimoney. This material/document/Report is being supplied to you solely for your information, and its contents, information or data may not be reproduced, redistributed or passed on directly or indirectly.

A graph of daily closing prices of securities available at <http://www.nseindia.com/ChartApp/install/charts/mainpage.jsp>, www.bseindia.com and <http://economictimes.indiatimes.com/markets/stocks/stock-quotes>. (Choose a company from the list on the browser and select the "three years" period in the price chart).

Recipients of the Report shall always independently verify reliability and suitability of the Report and opinions before investing.

For Company details, please visit our website www.destimoney.com

For research related query, write to us at research@destimoney.com